



Veeam Monitor

The industry standard for VMware monitoring



As part of Veeam ONE™, Monitor has won awards from VMworld, *Virtualization Review* and SearchServerVirtualization.com.

“Veeam Monitor has become an essential tool in our virtual management toolbox. We use it to evaluate the performance of our virtual host systems. This information in turn helps us make decisions on how to best allocate our virtual host resources to new virtual machines.

“We looked for a tool for quite some time that was compatible with ESXi, and found what we were looking for in Veeam Monitor. Veeam Monitor is easy to install, simple to configure, and collects the data you need to effectively monitor your VMware hosts.”

Tom Williamson
Network Analyst
City of Lynchburg



Veeam Monitor is verified by VMware as VMware Ready.

Veeam Monitor™ is an easy-to-deploy, framework-independent VMware monitoring solution designed to meet the day-to-day needs of VMware administrators. Built from the ground up specifically for the virtual world, Monitor provides support for troubleshooting and issue resolution, as well as trend reporting—equipping you to proactively manage the health and performance of your VMware infrastructure today and over the long term.

With Monitor, you can view both real-time and historical resource usage for any virtual infrastructure object, as well as infrastructure events, all on a single screen. You gain a view of your virtual infrastructure as a unified entity, not just a collection of isolated guests.

Virtual infrastructure performance analysis

Monitor shows comprehensive resource consumption and workload data for hosts, clusters and datastores, with visibility all the way down to the individual VM and the applications running inside it. Find out at a glance which components of your VMware infrastructure are the largest resource consumers and which ESX(i) hosts are the least loaded—right now and over time. Drill down into Windows and Linux/Unix VMs, ESX hosts and vCenter Servers to monitor resource usage for specific applications.

Troubleshooting

In addition to monitoring the performance of your virtual environment and troubleshooting identified issues, you can drill down into individual virtual machines (VMs), view their running processes, and even terminate processes as needed—all from the Monitor interface. Or you can simply connect to the VM console to resolve the issue.

Business-centric monitoring

Monitor leverages Veeam Business View™ to enable performance monitoring, alerting and reporting for VM groups based on business unit, department, location, purpose, service-level agreement or any other criteria you define. Such business-centric monitoring enables more granular service-level management because it allows you to create flexible alerts based on known organizational characteristics and the potential business impact of an outage.

Monitoring dashboards

Monitor includes a summary dashboard for each object in the infrastructure tree giving you an at-a-glance view of the most useful information for any object and the ability to drill down to more detailed data as required.

Storage monitoring

Monitor provides full storage monitoring capabilities, including disk space and datastore monitoring. The latter includes viewing datastore load information aggregated from disk utilization statistics for all VMs and hosts using the specific datastore. This allows you to see the actual cumulative load on a particular datastore and alarm when that load is above a specified threshold.

To learn more, visit: www.veeam.com

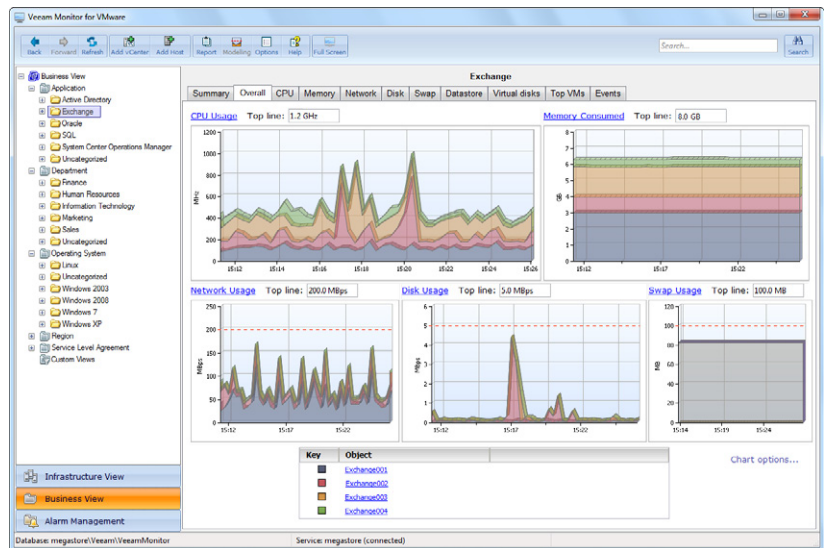
Veeam ONE

for VMware management

Veeam Monitor is a part of Veeam ONE, a comprehensive solution for optimizing the performance, configuration and utilization of VMware environments. As a framework-independent point solution, Veeam ONE provides real-time monitoring, capacity planning, change management, reporting and chargeback for your virtual infrastructure.

Supported platforms

- VMware vSphere 5.0
- VMware vSphere 4.x
- VMware Infrastructure 3 (VI3)



Monitor offers at-a-glance views of key performance metrics across multiple vCenter Servers.

Advanced alerting and built-in intelligence

Monitor includes over 125 pre-defined alarms with best-practices thresholds and an extensive knowledge base. The knowledge base explains each alarm and provides possible causes, suggested resolution and links to sources of additional information. You get monitoring you can rely on, without being overwhelmed with irrelevant alarms.

With Monitor, you can easily set up e-mail notifications and SNMP traps for important events, such as when a given number of running VMs is exceeded, host hardware status changes or specific events are generated by a vCenter Server. The alarm modeler lets you quickly validate you are correctly setting alarm benchmarks and thresholds by testing candidate alarms against historical data.

Correlation of event and performance data

Monitor helps you understand how virtual infrastructure activities affect VM performance and solve resource usage mysteries by overlaying real-time monitoring graphs with known virtual infrastructure events, such as vMotion, snapshot creation and deletion, and backup activities.

Consolidated monitoring

Monitor is an enterprise-class application that enables multi-user access to performance data without affecting ESX(i) host or vCenter Server performance or changing your access policies. It agentlessly gathers all performance information into a Microsoft SQL Server database, allowing users to access infrastructure-wide performance data and reporting as needed. Monitor is integrated with vCenter Server to provide cluster-aware monitoring of your VMs.

And with support for multiple vCenter Servers, Monitor displays performance data for your entire virtual infrastructure on a single screen—no matter how large your VMware deployment is.



To learn more, visit: www.veeam.com

