



## Monitoring and troubleshooting for VMware

“Veeam Monitor has become an essential tool in our virtual management toolbox. We use it to evaluate the performance of our virtual host systems. This information in turn helps us make decisions on how to best allocate our virtual host resources to new virtual machines.

“We looked for a tool for quite some time that was compatible with ESXi, and found what we were looking for in Veeam Monitor. Veeam Monitor is easy to install, simple to configure, and collects the data you need to effectively monitor your VMware hosts.”

**Tom Williamson**  
**Network Analyst**  
**City of Lynchburg**

You can think of Monitor as a “fire extinguisher” for your virtual infrastructure. Veeam also offers solutions that provide a “smoke detector” that leverages the enterprise management system you already have. The Veeam nworks products integrate virtual infrastructure monitoring into Microsoft System Center and HP Operations Manager.

To learn more about these enterprise integration solutions, please visit:  
<http://www.veeam.com/vmware-monitoring-alerting.html>

Veeam Monitor™ is an easy-to-deploy, framework-independent VMware monitoring solution designed to meet the day-to-day needs of VMware administrators. Built from the ground up specifically for the virtual world, Monitor provides support for troubleshooting and issue resolution, as well as trend reporting—equipping you to proactively manage the health and performance of your VMware infrastructure today and over the long term.

With Monitor, you can view both real-time and historical resource usage for any virtual infrastructure object, as well as infrastructure events, all on a single screen. This allows you to see your virtual infrastructure as a unified entity, not just a collection of isolated guests.

Once you determine what is causing a specific performance issue, you can drill down into individual virtual machines (VMs), view their running processes, and even terminate processes as needed—all from the Monitor interface. Or you can simply connect to the VM console to resolve the issue.

### Business-centric monitoring

Monitor leverages Veeam Business View™ to enable performance monitoring, alerting and reporting for VM groups based business unit, department, location, purpose, service level agreement or any other criteria you define. This ability to perform business-centric monitoring allows you to create flexible alerts based on known server type characteristics and the potential business impact of an outage for more granular service level management.

### Virtual infrastructure performance analysis

Monitor shows comprehensive resource consumption and workload data for hosts, clusters and datastores, with visibility all the way down to the individual VM and the applications running inside it. Find out at a glance which components of your VMware infrastructure are the largest resource consumers and which ESX hosts are least loaded—right now and over time. Drill down into Windows and Linux/Unix VMs, ESX hosts and vCenter servers to monitor resource usage for specific applications.

### Storage monitoring

Monitor provides full storage monitoring capabilities, including disk space, disk issues and datastore monitoring. The latter allows for viewing datastore load information aggregated from disk utilization statistics of all VMs and hosts using the specific datastore. This allows you to see the actual cumulative load on a particular datastore and set up an alarm that notifies you when the datastore load is above a specified threshold.

To learn more, visit: [www.veeam.com](http://www.veeam.com)

## System Specifications

### No agents:

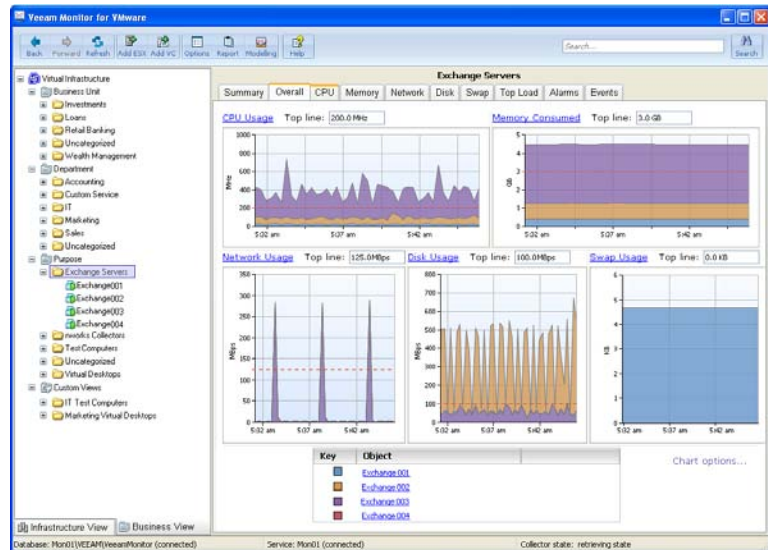
Veeam Monitor collects data agentlessly using the vSphere API and other published data sources. It collects real-time performance and event data across multiple vCenters, as well as hardware data.

### SQL Server repository:

Monitor archives data in a SQL Server repository. Monitor collects data once for all users to eliminate unnecessary overhead on vCenter servers, which are critical to the operation of your virtual infrastructure. You can archive data in Microsoft SQL Server 2008 or SQL Server 2005 (Express Edition included).

### Supported VMware platforms:

- vCenter 4
- Virtual Center 2.x
- ESX 3.x and 4
- ESXi 3.x and 4



Monitor offers at-a-glance views of key performance metrics across multiple vCenters.

## Advanced alerting and flexible alarms with modeling

Monitor provides comprehensive alerting with custom alarms that can be based on many sources. Easily set up e-mail notifications or SNMP traps for important events such as a given number of running VMs is exceeded, host hardware status changes, or a specific event is generated by vCenter. The alarm modeling feature lets you quickly ensure that you have correctly set alarm benchmarks and thresholds by testing a newly created alarm using historical data.

## Correlation of event and performance data

Monitor helps you understand how virtual infrastructure activities affect VM performance and solve resource usage mysteries with real-time monitoring graphs displaying known virtual infrastructure events, such as VMotion, snapshot creation and deletion, or backup activities, directly on performance graphs.

## Scalable architecture

Monitor is an enterprise-level application that enables multi-user access to performance data without affecting ESX server or vCenter performance or changing your access policies. It gathers all performance information into a SQL Server database, allowing users to access infrastructure-wide performance data and reporting as needed. Monitor is integrated with vCenter to provide cluster-aware monitoring of your VMs. And with support for multiple vCenters, Monitor shows performance data from your entire virtual infrastructure on a single screen—no matter how large your VMware deployment is.



To learn more, visit: [www.veeam.com](http://www.veeam.com)

