



What's New in Veeam Monitor 5.0

Veeam Monitor 5.0 is a major update to Veeam's framework-independent monitoring solution for VMware vSphere 4 and VMware Infrastructure 3 (VI3).

Version 5.0 keeps Veeam customers on the forefront of VMware technology by supporting and leveraging the latest release of vSphere. As a result of ongoing research and development and in response to customer feedback, version 5.0 also includes important enhancements and new features.

The new release illustrates why Veeam is #1 in customer satisfaction, innovation and value.

Veeam Monitor™ 5.0 is the new release of Veeam's easy-to-deploy, framework-independent monitoring solution for VMware virtual environments. Built specifically for the virtual world, Veeam Monitor provides a cohesive view of your entire virtual infrastructure, alerting you of performance issues and providing diagnostic data and built-in advice to enable quick problem resolution and expert tuning.

Version 5.0 includes support for VMware vSphere 4.1 as well as a number of new features and enhancements:

Support for vSphere 4.1

Veeam Monitor 5.0 provides comprehensive support for vSphere 4.1: it is fully compatible with vSphere 4.1, makes use of the 100+ new performance metrics in vSphere 4.1, and even quantifies the benefits of upgrading to vSphere 4.1. For example, Veeam Monitor 5.0 analyzes memory compression and calculates savings for ESX(i) hosts and individual virtual machines (VMs).

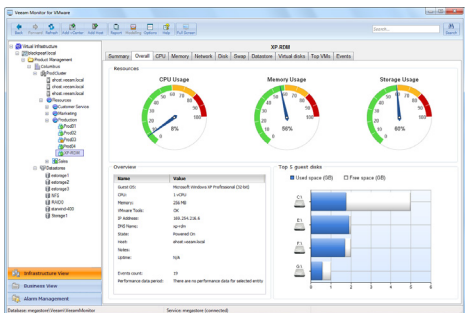
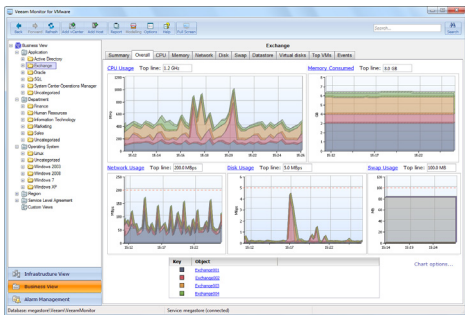
Veeam Monitor 5.0 also uses new performance data now available in the vSphere API to monitor:

- NFS storage: In addition to local and fibre channel/iSCSI storage, you can now monitor NFS storage. With NFS becoming a viable option for VM storage, this capability is critical
- Storage paths and storage adapters: including load balancing status, I/O, latency, and read/write rates
- Virtual disks: including I/O, latency, and read/write rates
- Power usage of ESX(i) hosts

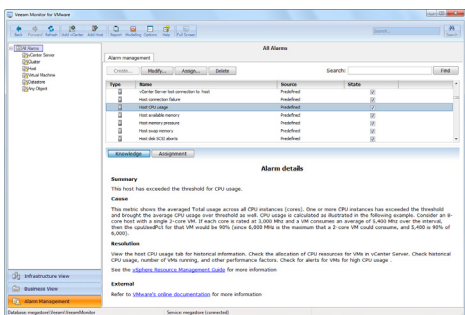
Built-in intelligence

Veeam Monitor 5.0 includes over 125 pre-defined alarms and thresholds and an extensive knowledge base. The knowledge base explains each alarm and provides possible causes, suggested resolution, and links to sources of additional information. Alarms and thresholds are based on years of customer feedback and Veeam experience about which metrics are important and what their operating ranges should be in a well-performing VMware environment. You get monitoring you can rely on, without getting overwhelmed with irrelevant alarms.

With meaningful alarms and VMware expertise available at your fingertips, you can find and fix problems before users are affected and tune your VMware environment to achieve even higher levels of performance and reliability.



New dashboards in Veeam Monitor 5.0 provide an at-a-glance view of the most useful information for any object in the infrastructure tree.



Veeam Monitor 5.0 includes rich built-in knowledge base that explains each alarm and provides possible causes, suggested resolution and links to sources of additional information.

Dashboards

Veeam Monitor includes a new summary dashboard for each object in the infrastructure tree. The new dashboards provide an at-a-glance view of the most useful information for any object, with easy drilldown to more detailed information, as required.

For any object above the cluster level (such as a datacenter), a cluster overview dashboard is also available. This dashboard provides the most important information about the health of all the underlying clusters.

Other enhancements

Monitoring of logical disk space. One of the most common problems in virtual environments and a leading cause of service delivery issues is the guest operating system (OS) running out of local disk space. Now you can eliminate this problem by monitoring, alerting and reporting on free disk space on volumes inside the guest OS.

Snapshot monitoring. Another common problem in virtual environments is abandoned snapshots, which keep growing, fill the datastore and affect other VMs residing on that datastore. Even if you minimize your use of snapshots, the problem may still occur due to activities such as failed backups, forgetting to commit the snapshot after applying patches, and so on. Veeam Monitor 5.0 now warns of VMs whose snapshots exceed a specified size, so that you can investigate if those snapshots are really needed. It also displays the top VMs in terms of snapshot size for each node (virtual infrastructure, vCenter Server, datacenter, cluster, etc.) in the infrastructure tree.

Management reports. New management-oriented reports were carefully designed to consolidate and provide useful summaries of the most important performance and VM metrics. For example, with the new Infrastructure Overview reports, simply select an object in the infrastructure tree (virtual infrastructure, vCenter Server, datacenter, cluster, etc.) or any group defined in Veeam Business View™ (department, location, server type, service-level agreement, etc.), and get a summary report for all objects below the selected one. You can also generate a consolidated report on thin storage to identify overprovisioned storage.

Streamlined alarm management. Veeam Monitor 5.0 includes new capabilities and a dedicated node in the user interface (UI) to manage alarms and thresholds. You can search, filter, assign, disable and perform other actions on pre-defined alarms as well as your own custom alarms.

Scalability and architecture improvements. Veeam Monitor 5.0 includes architecture improvements for even better scalability and performance, with significantly less load on the backend Microsoft SQL Server database. For example, depending on the number of objects to be monitored, you can monitor over 200 ESX(i) hosts with a single 64-bit Veeam Monitor server connected to a 64-bit database server. In addition, Veeam Monitor 5.0 offers improved SQL Server integration, including support for clustering.

UI enhancements. Veeam Monitor 5.0 offers a full screen view and displays user-friendly datastore names.



To learn more, visit: www.veeam.com

