

Veeam ONE

What's New in v9?

Veeam ONE® is a powerful monitoring, reporting and capacity planning tool for the Veeam backup infrastructure, VMware vSphere and Microsoft Hyper-V. It helps enable *Availability for the Always-On Enterprise™* by providing complete visibility of the IT environment to help detect issues before operational impact. The following is a list of over 100 new features and functionalities introduced with Veeam ONE v9 that are designed to help users better maintain a high Availability data center.

What's new: General functionality

Monitoring

- **Object maintenance mode improvements:** You can now schedule object maintenance mode at a specific time and date.

Alarms

- **Enhanced email notification options:** Email notifications now include Business View group membership and IP address of the object.
- **Improved alarm filtering options:** Now, users can sort all alarms by resolution type and show resolution type (automatic or manual) in the alarm management node.
- **Enhanced alarm suppress period:** Alarms now can be scheduled at a specific time for a specific day via advanced suppress options.
- **New options for alarm rules:** Alarms can now have different rules combined by "AND/OR" logical operators.
- **Combo-alarms:** Now, users can create alarms based on existing alarms by combining them under the alarm rules configuration.
- **New internal predefined alarms:** Internal alarms can now track the time difference between monitored objects and the Veeam ONE server which prevents data collection issues.
- **Ability to restore alarms to their defaults:** Alarms now retain a history of rule threshold adjustments. Every alarm can be returned to its default configuration.
- **New alarm state:** Users can now place triggered alarms into an acknowledged state. This allows users to keep alarms in the current state but removes all alerts and notifications.
- **Event-driven alarms creation:** Now, users can simply create alarms by right-clicking on the event name in the Events & Tasks tab in the Veeam ONE Monitor Client.
- **Performance alarms creation:** Users can now create alarms by simply right-clicking on the performance counter name in the Veeam ONE Monitor Client.
- **Alarms for clusters:** Now, a user can create performance alarms for all monitored clusters.
- **Enhanced options for suppressing alarms during backup job runs:** Now, alarms can be suppressed for VMs that are not backed up but are located on the same datastore or host with the VM that is being backed up.
- **Export options:** Now, users can export all triggered alarms to a CSV file from a Monitor Client.

Veeam product suites designed for every business

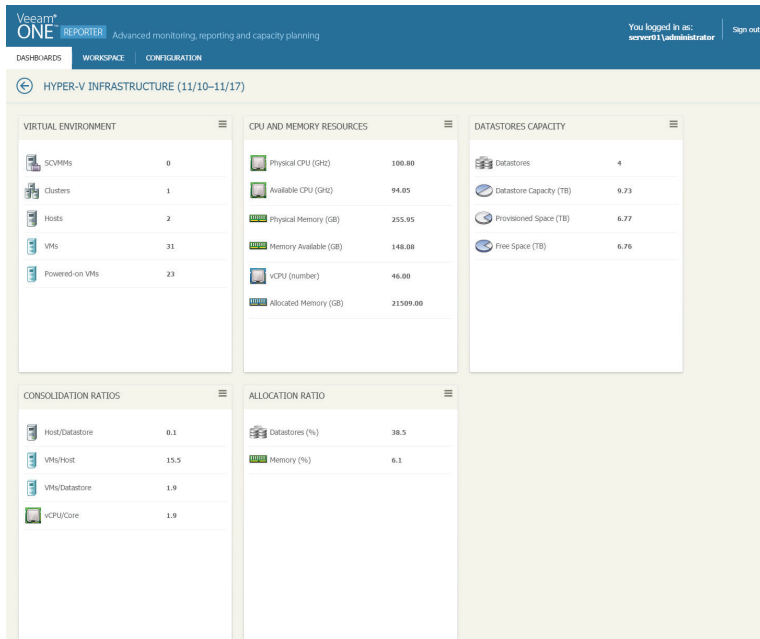
Veeam Backup & Replication™ and Veeam ONE are better together. Veeam combines its two marquee solutions to help businesses maintain a high Availability data center through five key capabilities, including High-Speed Recovery, Data Loss Avoidance, Verified Recoverability, Leveraged Data and Complete Visibility.

Veeam Availability Suite™ combines the industry-leading backup, restore and replication capabilities of Veeam Backup & Replication with the advanced monitoring, reporting and capacity planning functionality of Veeam ONE to deliver the Availability your business needs to remain Always-On™.

Veeam Backup Essentials™ is a powerful, easy-to-use and affordable backup and Availability solution designed for small businesses with less than 250 employees and virtual environments of up to 6 CPU sockets. Veeam Backup Essentials delivers the exact same functionality as Veeam Availability Suite with a savings of up to 60% or more.

Dashboards and Widgets

- **Enhanced dashboard usability:** All predefined dashboards now display the latest refresh time for all widgets.



Veeam ONE v9's new look and feel

- **New reporting intervals for widgets:** Predefined widgets that report intervals now include past week, past month, current week and current month.

Reporting

- **New parameters in reports from the custom report pack:** Now, users can generate these reports by excluding business hours from reporting.
- **TOP N parameter in all reports from custom report pack:** Users can now filter reports from the custom report pack by TOP N objects parameters.
- **Report builder enhancements:** The new version of report builder provides support for a Custom Infrastructure report.

Business view categorization

- **New logical operators for Business View groups:** Business view dynamic group now supports AND/OR logical operators in its expression.
- **New categorization options for VMs:** Users can now categorize all monitored VMs based on the VM networks they are connected to and by their location.
- **Updated logic for saving vSphere Tags:** Now, all vSphere tags are overwritten within the same category and do not create duplicates.

Other

- **Scalability improvements:** Veeam ONE Server now uses its guest OS local disks to store a real-time performance data cache which dramatically improves the maximum number of supported VMs, hosts and datastore in the virtual infrastructure.
- **Per-VM licensing for service providers:** The license key now includes an additional field in the file for a per-VM licensing model.
- **License auto-update:** Now, users can automatically update their license keys according to their contract.

Supported Environments

VMware infrastructure*

Platforms

- vSphere 6.0
- vSphere 5.x
- vSphere 4.1

Hosts

- ESXi 6.0
- ESXi 5.x
- ESXi 4.1
- ESX 4.1
- vSphere Hypervisor (free ESXi)

Software

- vCenter Server 6.0 (optional)
- vCenter Server 5.x (optional)
- vCenter Server 4.1 (optional)
- vCloud Director 5.1, 5.5 (optional)

*Only English version of VMware infrastructure is supported

Microsoft infrastructure

Platforms

- Windows Server 2012 R2
- Windows Server 2012
- Windows Server 2008 R2 SP1

Hosts

- Windows Server Hyper-V 2012 R2
- Microsoft Hyper-V Server 2012 R2 (free)
- Windows Server Hyper-V 2012
- Microsoft Hyper-V Server 2012 (free)
- Windows Server Hyper-V 2008 R2 SP1
- Microsoft Hyper-V Server 2008 R2 SP1 (free)

Software

- Microsoft System Center Virtual Machine Manager 2012 R2 (optional)
- Microsoft System Center Virtual Machine Manager 2012 SP1 (optional)
- Microsoft System Center Virtual Machine Manager 2008 R2 SP1 (optional)

Backup infrastructure

Platforms

- Veeam Backup & Replication v9
- Veeam Backup & Replication v8
- Veeam Backup & Replication v7 patch 4

Hosts

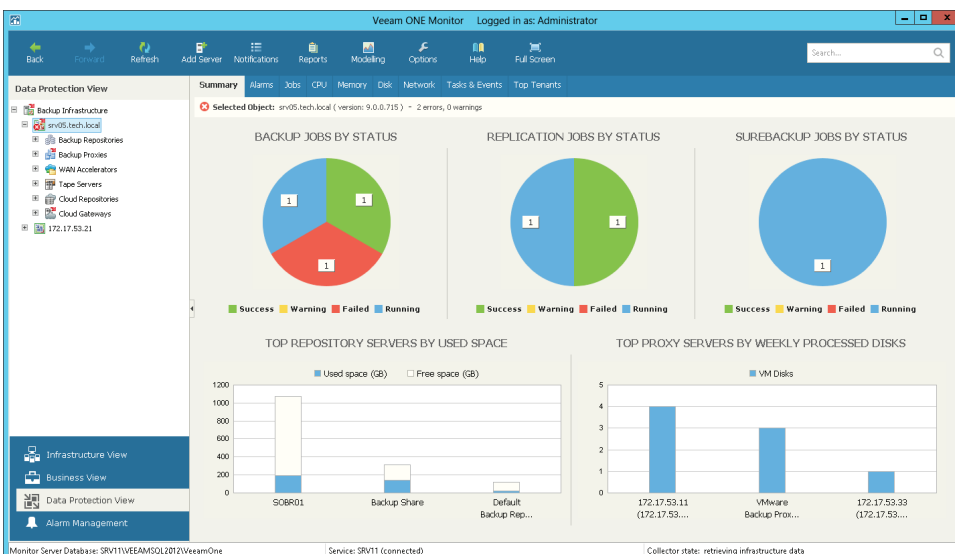
- Veeam Backup & Replication server
- Veeam Backup Enterprise Manager (optional)

- **Filters for events and tasks tab:** Users can now filter triggered events and tasks, according to their severity state.
- **Export events and tasks:** Users can export triggered events and tasks to Excel directly from the Veeam ONE Monitor Client.
- **Veeam ONE Client x64 version:** To improve scalability, Veeam ONE now has an x64 version of the Veeam ONE Client application.
- **Enhanced user login options:** Users can now specify an account name to use during the login process.
- **Veeam ONE Client auto-update:** Veeam ONE Client is now automatically updated at the initial connection if it doesn't match the Veeam ONE server version and build number.
- **Setup enhancements:** Users can now pre-configure an address of the Veeam ONE server during a remote Veeam ONE client installation.
- **Updated alarms import logic:** An alarms import operation can now be done for the Veeam ONE FREE version.
- **Updated user interface:** The Veeam ONE user interface has been redesigned and optimized for large-scale infrastructures.

What's New: Backup

Monitoring

- **Scale-out Backup Repository™:** Monitor Client now displays Scale-out Backup Repository in its data protection view tree.
- **Performance monitoring for Veeam tape servers:** Veeam ONE now gathers CPU, memory, disk and network performance metrics for Veeam tape servers (Windows only).
- **Veeam backup events:** The Veeam ONE server now collects all events triggered in the Windows event log of the Veeam Backup & Replication server.
- **TOP tenants dashboard for Veeam Cloud Connect users:** The Monitor Client now displays information about TOP tenants by transferred data, utilization time, etc.
- **Updated dashboards for Veeam Cloud Connect:** WAN accelerator and cloud gateway dashboards have been updated to reflect changes made in Veeam Backup & Replication v9.
- **Veeam Cloud Connect replication jobs:** Monitor Client displays all configured Veeam Cloud Connect replication jobs including their latest state and performance statistics.



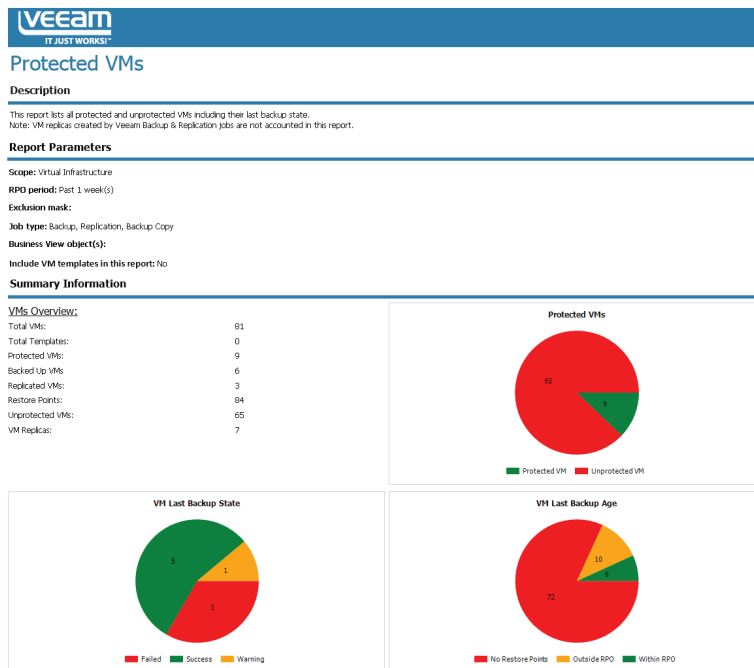
Backup Summary Dashboard

Alarms

- **Alarm for tracking job state:** Users can now track how much time each job has spent in the disabled state.
- **Alarm for monitoring a backup window:** Now, users can control and monitor job duration via a predefined alarm that sends email notifications when any job exceeds its configured backup window.
- **VMs with no replica:** This new alarm notifies users if a mission-critical VM lacks any restore points within a defined RPO period.

Reporting

- **Enhanced job configuration change tracking report:** This report now uses “user-friendly” names of the backup job properties.
- **Enhanced backup inventory report:** This report now includes the list of protected VMs in a drill-down report for every job.
- **Enhanced tape media retention period report:** This report now includes expired tapes in the summary section.
- **Enhanced rendering performance for protected VMs and VM backup status reports:** Report generation performance is dramatically improved and adapted for large-scale infrastructures.
- **Enhanced protected VMs report:** This report now includes backup copy jobs.



Protected VMs report

- **Enhanced restore operator activity report:** Now, this report includes users’ notes about the reason for a restore task.
- **Enhanced VM change rate estimation report:** This report now displays data for VMs that were powered off at the time a report was generated.
- **Enhanced backup job historical information report:** This report now includes information about tape jobs.
- **Enhanced backup billing report:** New time intervals have been added as parameters to the report.
- **Job configuration dump:** This report provides complete information on current job configuration parameters.

- **Tape GFS configuration:** This report provides configuration information about GFS Media Pools and backup to tape jobs writing restore points to the Media Pools.
- **Exported tapes:** This report lists all tapes exported from the tape library.
- **Backup job data exclusions:** This report provides information about excluded objects from the backup jobs, including VMs, virtual disks, files and folders.
- **Backup copy GFS backup files:** This report provides data about historical backups for backup copy jobs configured to use the GFS retention policy.
- **Scale-out Backup Repository configuration:** This report shows configuration and statistics of Scale-out Backup Repositories.
- **Oracle item restore tracking:** The Restore Operator Activity report now includes Oracle item restore activity.
- **Unmapped datastore LUNs:** This report provides lists of all LUNs that are not mapped to the backup proxy operating in the Direct SAN access processing mode.
- **Backup alarms current state:** This report shows all currently unresolved alarms (Errors and/or Warnings) and displays why these alarms were triggered in your infrastructure.
- **Backup alarms overview:** This report provides an overview of your data protection health state including backup infrastructure alarms and most affected jobs.
- **Support for per-VM backup chains in the billing report:** The backup billing report can now display information about consumed space for each backed up VM that is stored in a separate backup chain.
- **Support for per-VM backup chains in the backup files growth report:** The backup files growth report can now display information about consumed space for each backed up VM that is stored in a separate backup chain.
- **Enhanced Veeam Cloud Connect users report:** Now, users can select individual tenants for historical data reporting to individually determine each tenant's quota usage.
- **Enhanced Veeam Cloud Connect inventory report:** This report now includes information about Veeam Cloud Connect Replication functionality.
- **Veeam Cloud Connect replication provisioning:** This report helps identify the potential impact of excessive over-provisioning of hosts and datastores used by Veeam Cloud Connect Replication jobs.
- **Updated Veeam Cloud Connect report pack policy:** This report pack is now available in the Veeam ONE Free edition for backup servers running regular backup and replication jobs.

What's New: Microsoft Hyper-V

Monitoring

- **New CPU performance metrics:** The list of monitored counters now includes CPU wait time and virtual CPU usage performance metrics.
- **Free space monitoring for CSVs and SMB shares:** Now, users can review space usage metrics for CSV and SMB shares within the Monitor Client.

Alarms

- **VM guest OS reboot alarms:** Users can receive notifications when the VM guest OS is rebooted by a user and by the host itself.
- **New alarms for monitoring health state of Hyper-V host:** Now, alarms monitor the health state of all critical management services of a Hyper-V host.
- **Alarm for monitoring Hyper-V memory pages:** This alarm is a primary indicator of the types of faults that cause system-wide delays.
- **Hyper-V host reboot:** This new predefined alarm tracks manual and automatic restarts of the guest OS of the Hyper-V host.
- **Host CPU wait:** This alarm monitors how much time VMs wait to get the required CPU resources from the host.

Reporting

- **Idle VMs:** This report shows the list of idle VMs in terms of CPU, memory, disk and network usage.
- **Oversized VMs:** This report helps detect virtual machines that have more allocated vRAM or vCPU resources than they require.

Report description
This report helps you to discover VMs with under-utilized CPU and memory resources. It analyzes VMs historical performance and configuration data to provide recommendations on appropriate vCPU and vRAM allocation for VMs.

Report parameters
Scope: Virtual Infrastructure
Reporting period: 1 month
Business View object(s):
Top N: 5

Summary Information

Total oversized VMs:	15
Total VMs:	33
CPU oversized VMs:	10
Memory oversized VMs:	11
CPU resources that can be reclaimed:	12 vCPUs
vRAM amount that can be reclaimed:	7.00 GB

Oversized Virtual Machines by CPU

SCIMM/Cluster	Host	Virtual Machine	CPU			Reclaimed resource CPU ↓	Recommendation
			vCPUs	Average Usage (%)	Peak Usage (%)		
E cluster01.tech.local	E hyperv01	5				7	
		oracle02_replica	2	3.00	3.00	1	1 Configure this VM with 1 vCPU.
	E hyperv02	vsal01	4	5.99	7.00	3	3 Configure this VM with 1 vCPU.
		veeamco2	2	6.89	9.00	1	1 Configure this VM with 1 vCPU.
		backupsrv01	2	4.99	6.00	1	1 Configure this VM with 1 vCPU.
		veeamco1	2	2.58	4.00	1	1 Configure this VM with 1 vCPU.

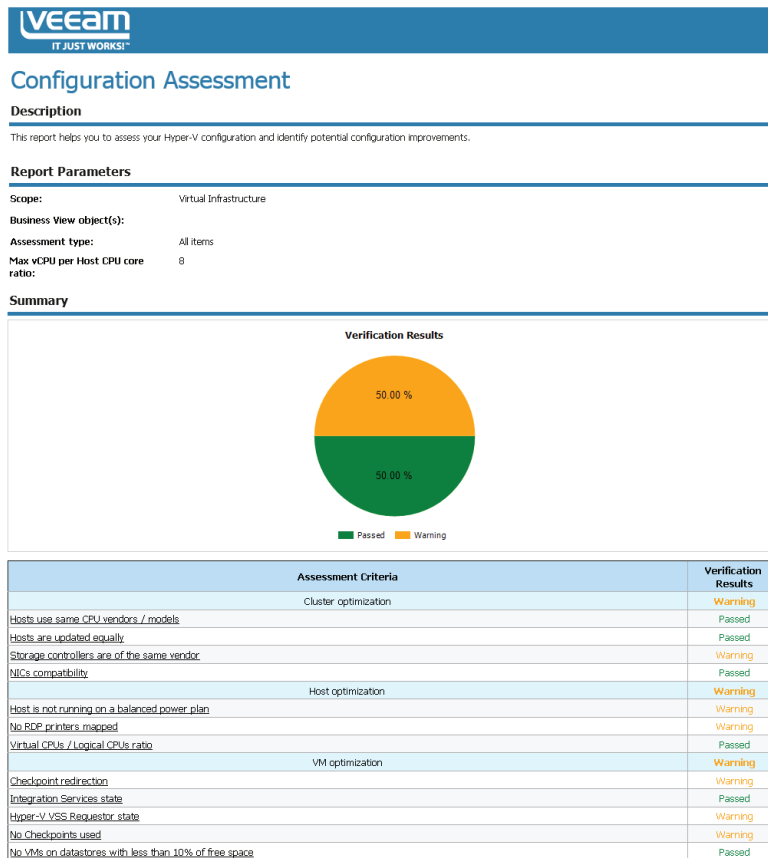
Oversized Virtual Machines by Memory

SCIMM/Cluster	Host	Virtual Machine	Memory			Reclaimed resource Memory (GB)	Recommendation
			Capacity (GB)	Average Usage (GB)	Peak Usage (GB)		
E cluster01.tech.local	E hyperv01	5				7.00	
		0M2012v2	21.73	17.75	17.89	4.00	Allocate 18 GBs of RAM.
	E hyperv02	server-N02	5.61	4.65	4.93	1.00	Allocate 5 GBs of RAM.
		vtd01	6.28	5.16	5.35	1.00	Allocate 6 GBs of RAM.
		oracle01	4.89	4.02	4.14	1.00	Allocate 5 GBs of RAM.
		sqlserv03	1.20	0.99	1.01	0.00	Allocate 2 GBs of RAM.

Microsoft Hyper-V oversized VMs report

- **Undersized VMs:** This report helps you detect virtual machines that have less allocated vRAM or vCPU resources than they require.
- **Powered off VMs:** This report shows a list of all VMs that were in a powered off state for a defined period of time.
- **Performance assessment:** This report helps assess performance of Hyper-V hosts and identify potential improvements in the infrastructure.

- **Configuration assessment:** This report helps assess configuration of Hyper-V hosts and identify potential improvements in the infrastructure.



Microsoft Hyper-V configuration assessment report

- **Failover cluster performance:** This report shows failover cluster performance history, including CPU, memory, disk and network counters.
- **Capacity planning:** This report predicts when utilization for the selected Hyper-V hosts in the infrastructure will reach the configured thresholds of total capacity.
- **Hyper-V host uptime report:** This report provides data about Hyper-V uptime for a selected time period.

What's New: VMware vSphere

Multi-tenancy

- **Support for local users in vCenter Server and vCloud Director:** Now, Veeam ONE supports local vCenter Server and vCloud Director and only displays objects for which these users have permissions.
- **Support for SSO users in vCenter Server and vCloud Director:** Now, Veeam ONE supports SSO users in vCenter Server and vCloud Director and only displays objects for which these users have permissions.
- **License key visibility restrictions:** Now, tenants cannot review information about the installed Veeam ONE license key.

Monitoring

- **vSAN monitoring:** The Veeam ONE server now collects performance metrics and triggered events. Users can also use these performance metrics and events in custom alarm creation.

Alarms

- **Host HA Agent failure:** This alarm tracks the state of HA agent on every ESXi host.
- **vSphere cluster HA warning:** This alarm tracks HA health state in the vSphere cluster.
- **vCenter storage Availability:** This alarm is based on existing predefined alarms monitoring every network connectivity aspect.

Reporting

- **Enhanced VM configuration assessment report:** New verification checks have been added to the report.
- **Enhanced alarms overview report:** This report now includes more information in the drill-down section.
- **VMware host uptime:** This report provides data about ESXi host uptime for the selected time period.
- **Infrastructure changes audit:** This report provides detailed audit data for all events that happened in the virtual infrastructure.
- **Enhanced guest OS disk report:** Now, this report analyzes growth rates for all monitored guest OS volumes.
- **Enhanced VM uptime report:** New output data including number of alarms and restarts for every VM, have been added to the report.
- **Enhanced oversized and undersized VMs reports:** Now, these reports take business hours into account while analyzing VM performance data.
- **Host failure report enhancements:** This report now supports Business View groups as a reporting parameter.
- **Enhanced VM growth report:** This report now takes into account automatic Quick Migration tasks in its analyses.
- **Enhanced idle VMs report:** This report now includes information about wasted CPU, memory and disk resources in the summary page.
- **Enhanced capacity planning report:** This report now has more time parameters for performance analysis.
- **vVols support:** vVols are now fully supported in all capacity planning reports.

Dashboards and Widgets

- **New parameters for “How many more VMs can be added” widget:** CPU and Memory threshold customizations have been added to the default settings.

vCloud Director

- **Expired VMs display:** Expired VMs are now displayed in vApp configuration in addition to the infrastructure tree.



Learn more
veeam.com



Download free trial
veeam.com/one

Global Alliance Partners:



Microsoft Partner
Gold Application Development
Gold Datacenter

